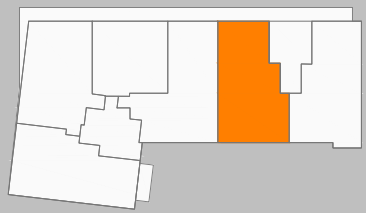


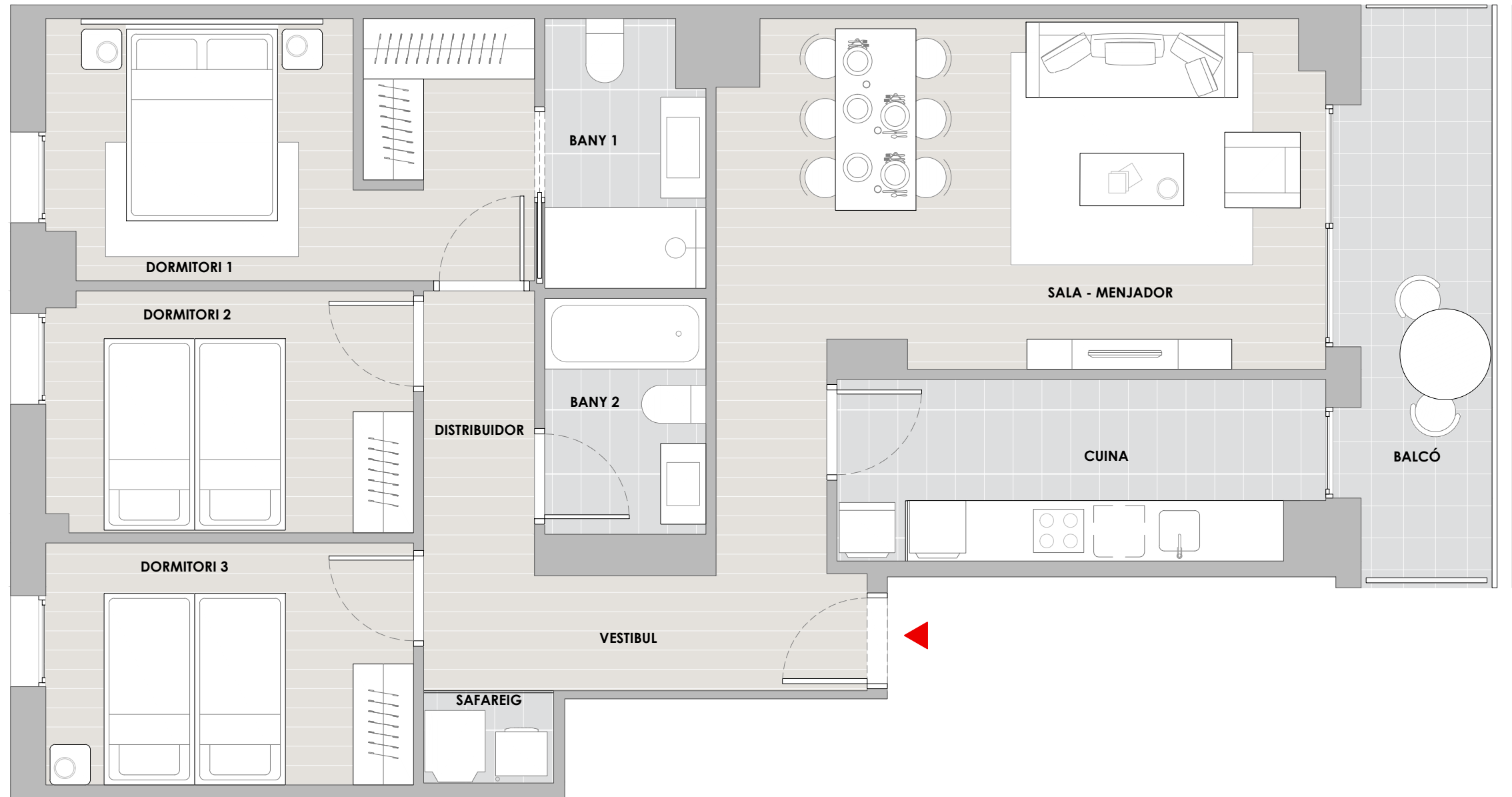
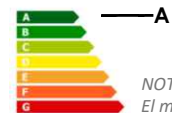
Escala B
Planta 7
Porta 2^a



Vestibul	1.73m ²
Cuina	8.48m ²
Sala - menjador	20.43m ²
Dormitori 1	12.23m ²
Dormitori 2	8.66m ²
Dormitori 3	8.76m ²
Bany 1	4.09m ²
Bany 2	3.74m ²
Safareig	1.18m ²
Distribuidor	8.59m ²
TOTAL Sup. útil	77.91m²
TOTAL Sup. construïda	92.29 m²
TOTAL Terrassa/Balcó	8.62m²



e.1:50



0 1 2 3